

## RENTALS - SUBWOOFERS (NON-POWERED)



### L'ACOUSTICS SB18

#### High Power compact subwoofer

- ❖ 32 Hz LF limit, high power handling, low distortion and thermal compression
- ❖ Progressive vent for increased peak SPL, and minimal turbulence noise
- ❖ DSP presets for cardioid mode (symmetrical and asymmetrical)
- ❖ Pole mount for XT series, ARCS® WIDE/FOCUS and KIVA
- ❖ Compatible rigging : SB18(i)/KARA®(i), SB18m/ARCS® WIDE - FOCUS



### L'ACOUSTICS K1-SB

#### Flyable High Power Subwoofer

- ❖ 30 Hz LF limit
- ❖ Extends K1 or K2 LF resources for special extended modes (throw and contour)
- ❖ Yields exceptional tonal balance homogeneity for long throw
- ❖ Increased K1 or K2 systems coherence reducing need for stacked
- ❖ Subwoofers - Progressive vents for increased SPL, laminar airflow and minimal
- ❖ Turbulence noise - High power handling, low distortion and thermal power compression

## RENTALS - SUBWOOFERS (NON-POWERED)



### L'ACOUSTICS SB28

#### High Power compact subwoofer

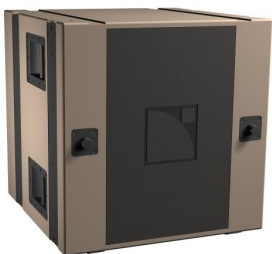
- ❖ 32 Hz LF limit, high power handling, low distortion and thermal compression
- ❖ Progressive vent for increased peak SPL, and minimal turbulence noise
- ❖ DSP presets for cardioid mode (symmetrical and asymmetrical)
- ❖ Pole mount for XT series, ARCS® WIDE/FOCUS and KIVA
- ❖ Compatible rigging : SB18(i)/KARA®(i), SB18m/ARCS® WIDE - FOCUS



### L'ACOUSTICS SB218

#### Dual 18" subwoofer enclosure

- ❖ Front-loaded, optimized bass reflex design
- ❖ High power handling, high efficiency, low thermal compression
- ❖ Integral rigging for flown applications
- ❖ Optimized for 25-200Hz bandwidth



### L'ACOUSTICS DV SUB

#### Triple 15" subwoofer enclosure

- ❖ Dual-chamber, vented bandpass design
- ❖ High power handling, high efficiency, low thermal compression
- ❖ Compact, optimally reduced dimensions
- ❖ Integral rigging for flown applications
- ❖ Compatible with all L-ACOUSTICS WST, XT models
- ❖ Signal processing via OEM factory presets for approved digital processors
- ❖ Optimized for 35 - 200 Hz bandwidth

## RENTALS - SUBWOOFERS (NON-POWERED)



### JBL VRX918SP

#### 18" Powered VRX Flying Sub

- ❖ Built-in JBL Drivepack® DPC-2 amplifier module designed by Crown provides 1500 Watts of peak Power. DSP based resident input module provides system optimization, EQ and crossover functionality.
- ❖ 18 inch, 2268FF dual voice coil, neodymium magnet Differential Drive® woofer for high-power capacity and light weight.
- ❖ Integral rigging hardware for simple connection of enclosures and optional array frame.
- ❖ 20 mm threaded pole socket for solid, secure satellite speaker mounting.
- ❖ Large port area for reduced distortion.