

RENTALS - SUBWOOFERS (NON-POWERED)



L'ACOUSTICS SB18

High Power compact subwoofer

- ❖ 32 Hz LF limit, high power handling, low distortion and thermal compression
- ❖ Progressive vent for increased peak SPL, and minimal turbulence noise
- ❖ DSP presets for cardioid mode (symmetrical and asymmetrical)
- ❖ Pole mount for XT series, ARCS® WIDE/FOCUS and KIVA
- ❖ Compatible rigging : SB18(i)/KARA®(i), SB18m/ARCS® WIDE - FOCUS



L'ACOUSTICS K1-SB

Flyable High Power Subwoofer

- ❖ 30 Hz LF limit
- ❖ Extends K1 or K2 LF resources for special extended modes (throw and contour)
- ❖ Yields exceptional tonal balance homogeneity for long throw
- ❖ Increased K1 or K2 systems coherence reducing need for stacked
- ❖ Subwoofers - Progressive vents for increased SPL, laminar airflow and minimal
- ❖ Turbulence noise - High power handling, low distortion and thermal power compression

RENTALS - SUBWOOFERS (NON-POWERED)



L'ACOUSTICS SB28

High Power compact subwoofer

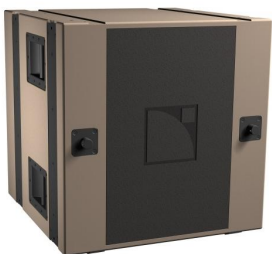
- ❖ 32 Hz LF limit, high power handling, low distortion and thermal compression
- ❖ Progressive vent for increased peak SPL, and minimal turbulence noise
- ❖ DSP presets for cardioid mode (symmetrical and asymmetrical)
- ❖ Pole mount for XT series, ARCS® WIDE/FOCUS and KIVA
- ❖ Compatible rigging : SB18(i)/KARA®(i), SB18m/ARCS® WIDE - FOCUS



L'ACOUSTICS SB218

Dual 18" subwoofer enclosure

- ❖ Front-loaded, optimized bass reflex design
- ❖ High power handling, high efficiency, low thermal compression
- ❖ Integral rigging for flown applications
- ❖ Optimized for 25-200Hz bandwidth



L'ACOUSTICS DV SUB

Triple 15" subwoofer enclosure

- ❖ Dual-chamber, vented bandpass design
- ❖ High power handling, high efficiency, low thermal compression
- ❖ Compact, optimally reduced dimensions
- ❖ Integral rigging for flown applications
- ❖ Compatible with all L-ACOUSTICS WST, XT models
- ❖ Signal processing via OEM factory presets for approved digital processors
- ❖ Optimized for 35 - 200 Hz bandwidth